

Chapter 5: View Menu

View Menu

How to get there

The View Menu is one of Finale's unchanging menus.

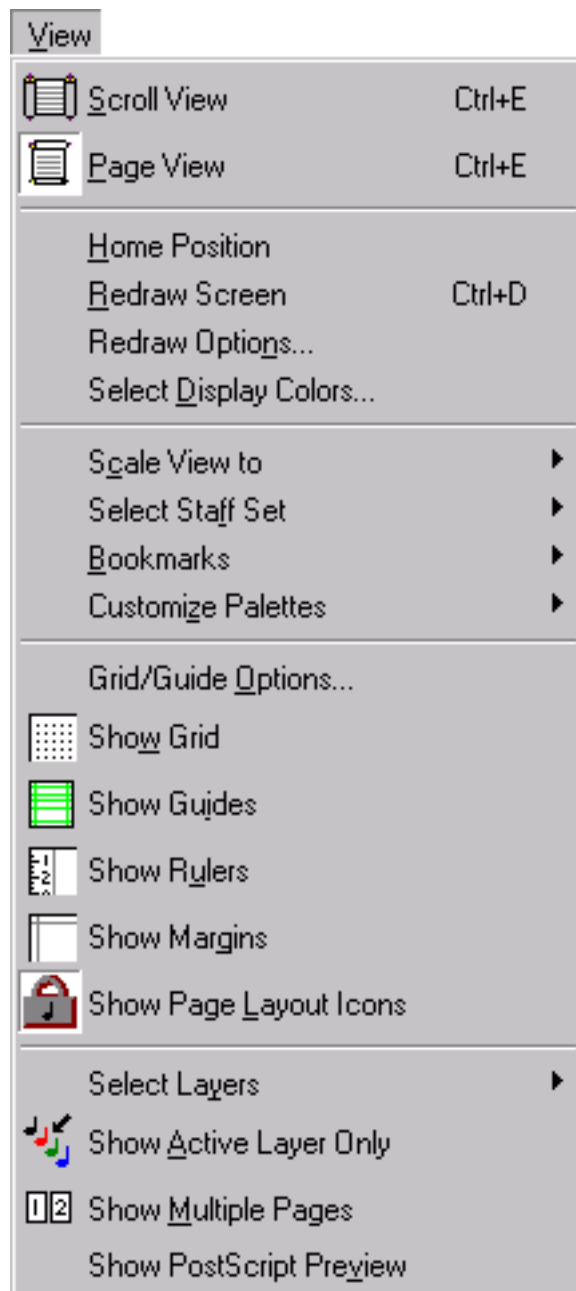
What it does

This menu contains commands pertaining to your view of the score. You can never change the score itself with the commands in this menu—only modify the way you see it on the screen. Show Active Layer Only is the only exception. This allows you to perform an operation on one layer at a time, including print.

For example, you can change the size of the displayed music, hide staves, rearrange the tool palette, or enable one of several speed-enhancing features.

If you press ctrl before displaying the View Menu, the Staff Sets and Tool Sets submenus change to Program Staff Sets and Program Tool Sets, indicating that you're ready to program a new staff or tool set.

[TOC](#)[Index](#)[Next
Chapter](#)[Previous
Chapter](#)[TOC](#)[Index](#)[Next
Chapter](#)[Previous
Chapter](#)



- **Scroll View • Page View.** Finale offers you the choice of two views of your music: Scroll View, where the music is a continuous horizontal band, and Page View, where the music is laid out like a page of sheet music. Most of Finale's tools work equally well in either mode, although you'll find that your computer redraws the screen faster in Scroll View than in Page View. Use these commands to switch from one view to another.
- **Home Position.** Choose this command to return to the first measure in the score (in Scroll View) or the upper-left corner of the current page (in Page View), no matter where you are in the piece. Press Shift while choosing Home to jump to the End.

[TOC](#)[Index](#)[Next Chapter](#)[Previous Chapter](#)[TOC](#)[Index](#)[Next Chapter](#)[Previous Chapter](#)

- **Redraw Screen.** Choose this command to force Finale to redraw the screen. Whenever you spot a visual anomaly—a phantom fragment of a slur, for example, or a missing barline—this command usually clears up the problem.
- **Redraw Options.** Choose this command to display the Redraw Options dialog box, where you can find a number of useful preference settings that have to do with screen redraw. For example, you can tell Finale to hide all lyrics (on screen), or only to redraw the screen when you explicitly tell it to. See [REDRAW OPTIONS DIALOG BOX](#).
- **Select Display Colors.** This command brings up the Select Display Colors dialog box which allows you to assign colors to different layers as well as to different elements in your score. See [SELECT DISPLAY COLORS DIALOG BOX](#) for more information.

TOC

Index

- **Scale View to: 400% • 200% • 100% • 75% • 50% • Other • Last Size • Fit in Window.** With these commands, you can specify the size at which you want the score displayed on your screen, expressed as a percentage of its actual size. You can't change the actual (printed) size of the notes on the page in this way; this technique simply lets you magnify or reduce the screen display of the fixed-size notes.

Next
Chapter

To change your view of the score, just choose the appropriate command from the submenu. (You can also use one of the ctrl-key equivalents, which use the first digit of each submenu percentage: press ctrl-2 for 200%, ctrl-7 for 75%, and so on. A double-right-click will scale the view to the last size.) If you choose Other, the Scale View dialog box appears, in which you can specify any reduction or enlargement you want—from 10% to 1000%. (See [SCALE VIEW DIALOG BOX](#).)

Previous
Chapter

If you've been viewing your score at several different degrees of magnification, Last Size takes you back to your last magnification setting.

There's one other command in the submenu: Fit in Window. This command is available only in Page View; it automatically reduces the viewing percentage just enough to fit the current page completely on your screen, no matter what size screen you have.

- **Select Staff Set: All Staves • Staff Set 1 • Staff Set 2 [etc.].** You can greatly speed your work on orchestral scores by hiding the staves you're not currently editing, so that there's less music for Finale to draw. You can create up to eight staff templates—different arrangements of the staves in your score. This method only changes the display in Scroll View. See [HIDING STAVES](#) for a complete description.

TOC

To create a staff set, click the Staff Tool; select the staves you don't want to hide. If you have many staves, and you only want to hide one or two, here's a quick way to do it. Choose Select All from the Edit Menu to select all handles; then shift-click a staff handle to exclude it from the selected staves.

Index

Next, while pressing ctrl, choose Program Staff Set from the View Menu; from the submenu, choose one of the Staff Sets (1 through 8). You've just defined a Staff Set. To view the new configuration of staves, choose the Staff Set you just programmed from the same submenu. Choose All Staves to restore all staves to the display.

Next
Chapter

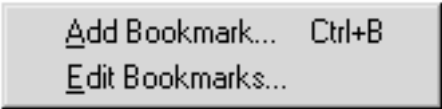
- **Bookmarks.** A Bookmark marks a particular position on a page (in Page View), or a measure in the music itself (in Scroll View). This enables you to access a certain page and a precise position on that page, or to jump to a marked measure in the music with a single command,

Previous
Chapter

quickly and efficiently. When you call a bookmark, Finale displays the music at the bookmark’s saved location and restores the working environment that was automatically saved with the bookmark, including the View (Page or Scroll View) and view percentage; you don’t have to spend time setting up your environment every time you change your position in the score. Another time-saving aspect of bookmarks: you can save bookmarks with standard MIDI files so you don’t have to create them again in your sequencing program; or convert sequencer markers to Finale’s bookmarks when you transcribe a standard MIDI file.

The Bookmarks submenu contains two easy-to-use commands, Add Bookmark and Edit Bookmarks, plus the names of bookmarks you have created. Use the Add and Edit Bookmarks commands to mark, edit, or delete bookmarks in the score. Choose a bookmark name from the Bookmarks submenu to immediately jump to that position in the score. (See [ADD BOOKMARK DIALOG BOX](#) and [EDIT BOOKMARKS DIALOG BOX](#).)

IMPORTANT: For fast, efficient entry of bookmarks, set up the view (Scroll or Page) and view percentage, and position the music on the screen before you create the bookmark. By doing this, the text boxes will accurately reflect the bookmark’s position without having to enter that information manually. Select the checkboxes for the settings you want remembered for the bookmark.



- **Customize Palettes:** Main Tool Palette • Navigation Tool Palette • Advanced Tool Palette • Simple Entry Tool Palette • Simple Entry Rests Tool Palette • Smart Shape Palette • Special Tool Palette • **Toolbars:** File Menu Toolbar • Edit Menu Toolbar • View Menu Toolbar • Options Menu Toolbar • Layout Toolbar • View Percent Toolbar. See [CUSTOMIZE TOOLBAR DIALOG BOX](#).
- **Grid/Guide Options.** Choose this menu item to display the Grid/Guide Options dialog box where you can set various options related to the display and actions of grids and guides. See [GRID/GUIDE OPTIONS DIALOG BOX](#).
- **Show (Hide) Grid • Show (Hide) Guides.** Choose these commands to show or hide your grid or guides.

Contextual menus

Contextual menus are reached by right mouse-clicking on the object. A contextual menu will be displayed where you can select various items.

Guides or Ruler with Show Guides

Menu item	What it does
Reposition Guide	Display the Grid Guide Options dialog box
Delete	Removes selected guide
New Guide	Display the New Guide dialog box

TOC

Index

Next Chapter

Previous Chapter

TOC



Index

Next Chapter

Previous Chapter

- **Show (Hide) Rulers.** Choose this command to display nonprinting rulers at the top and left side of the screen. As you drag an object, you can see thin dotted indicator lines that show you where the cursor is, making it easy for you to align and position various objects precisely on the screen. The units of measurement are whatever you've selected using the Measurement Units command in the Options Menu.
- **Show (Hide) Margins.** When you're in Page View (with Page View selected in the View Menu), you can show or hide your document's page margins and system margins. When selected (the command is checked) Finale draws the page and system margins in light gray on the screen. When not selected (the command is not checked) you'll only see the page boundaries on the screen.

In addition to the page and system margins, Finale shows two vertical lines on the page. The vertical lines indicate the center of the page, and the center point between the page margins.

- **Show Page Layout Icons.** When this item is selected, Finale displays non-printing icons for systems which have been locked  or systems where Optimization  or Page Breaks



have been applied with the Page Layout Tool. The systems are locked when you use the Fit Music command in the Mass Mover or Page Layout menu; when you move measures using the arrow keys in Mass Mover; and when you use L and U commands to Lock and Unlock selected systems when in Mass Mover. See [MASS MOVER TOOL](#), [FIT MUSIC DIALOG BOX](#), [PAGE LAYOUT MENU](#) and [UPDATE LAYOUT OPTIONS DIALOG BOX](#).

- **Select Layers.** The Select Layers submenu in the View Menu allows you to use a menu to choose the layer you want to edit. Choose Select Layers from the View Menu, then select an option from the submenu.
- **Show Active Layer Only.** Each Finale staff is actually four transparent layers, each of which can contain its own rhythmically independent inner voice. Only one layer can be active (front-most) at a time, however; the active layer is always identified by the depressed button in the lower-left corner of the document window and with a checkmark in Select Layers submenu of the View Menu.

When this item is selected (displaying a check mark), Finale hides the three inactive layers. Bear in mind that hidden layers are unaffected by almost every tool. For example, the music in a hidden layer won't be copied, pasted, or otherwise affected by Mass Mover operations—a useful fact to remember if you want to copy or paste the music of one layer only.

Choose this command a second time to make the check mark disappear (and make the other three layers reappear).

- **Show Multiple Pages.** This command, available only in Page View, tells Finale to display the pages of your piece side by side in rows across your screen. Such an arrangement allows you to get an overall picture of your score, because you can scan all pages of the document at once—that is, if you've reduced the view enough to fit all the pages on the screen.

On a small-screen computer, you'll need to reduce the music quite a bit in order to see more than one page at a time—for example, you might try choosing Fit in Window from the Scale View to submenu. In any case, you can only edit the music on the first displayed page.

TOC

Index

Next
ChapterPrevious
Chapter

TOC

Index

Next
ChapterPrevious
Chapter

- **Show PostScript Preview.** When you choose this command (Page View only), Finale “prints” the image described by the actual PostScript codes onto your screen, just as it would to a laser printer. Except for the fact that the screen resolution is much coarser than that of a printer, the Display in PostScript option provides you with the most accurate possible preview of what will be your printed output. Click to make the display return to normal.

Scroll View

How to get there

Choose Scroll View from the View Menu.

What it does

Scroll View is one of two Finale views of your music (the other is Page View). In Scroll View, you see your music as one long staff system. Scroll View can be easier to use when you enter music. When you want to see how the score will look when it is printed, switch to Page View.

Page View

How to get there

Choose Page View from the View Menu.

What it does

Page View is one of two Finale views of your music (the other is Scroll View). This is the default view and the view the Maestro Font Default file shipped with Finale presents you with when you open a new document. If you would like to change this setting when you open new documents, see [OTHER PROGRAM OPTIONS DIALOG BOX](#). In Page View, you see your music exactly as it will be printed: laid out in systems, displaying page -attached as well as measure-attached text blocks and graphics, and stretching the measures as needed so that each line of music is flush with the margins. Because of this stretching effect, music that appears a little crowded in Scroll View often looks just right in Page View.

Every Finale Tool works in Page View. Some tools like the Mass Mover and Note Mover tools, have features that are available in one view but not the other. In addition, Page View has a few features of its own, accessible from the View Menu. If you choose Fit in Window, Finale will reduce the view of your music just enough to fit the entire page onto the screen at once. You can also choose Show Multiple Pages, which displays all the pages in your piece, laid out side by side in rows across the screen. See [SHOW MULTIPLE PAGES](#).

Finally, Page View offers a feature called Show PostScript Preview. When you choose this command, Finale “prints” the actual PostScript instructions onto your screen, just as it would to a laser printer. See [SHOW POSTSCRIPT PREVIEW](#).

In general, Page View is slightly slower than Scroll View. Each time the screen redraws, for example, Finale not only has to draw more music, but must also perform many more calculations (to lay out the page, for example).

[TOC](#)[Index](#)[Next
Chapter](#)[Previous
Chapter](#)[TOC](#)[Index](#)[Next
Chapter](#)[Previous
Chapter](#)

If you notice in Page View that the measures are unevenly spaced, remember that Finale doesn't constantly rebalance the measure layout as you work. In fact, Finale doesn't recalculate the measure widths until you tell it to do so—by choosing Update Layout from the Edit Menu. This essential command reformats every page, from the one you're viewing to the end of the piece, neatly laying out evenly spaced measures and justifying them perfectly with the margins. (If you need to update the measure layout for the entire piece, as you should always do just before printing, choose the Update Layout command either in Scroll View or on page 1 of Page View.)

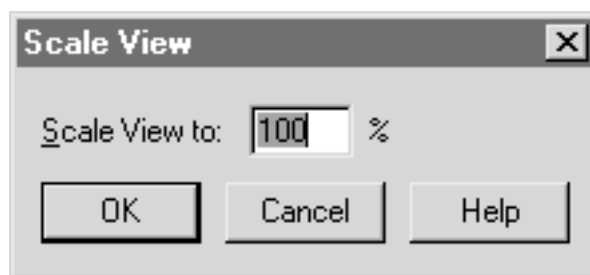
Scale View dialog box

How to get there

From the Scale View to submenu of the View Menu, choose Other (or type ctrl-0).

What it does

In this dialog box, you can specify the size at which you want the score displayed on your screen, expressed as a percentage of its actual size—in other words, you can “zoom in” to magnify fine details of your score or “zoom out” if you want to see many staves at once. Note that this screen display size has nothing to do with the actual (printed) size of the music.



- **Scale View to: ____ %.** In this text box, enter the percentage by which you want the screen display enlarged or reduced. Type 200, for example, to “zoom in” so that the music is displayed at twice its normal size.
- **OK • Cancel.** Click OK (or press enter) to return to the score, where Finale displays the music at the size you specified—or Cancel to return to the score without changing the display size.

Redraw Options dialog box

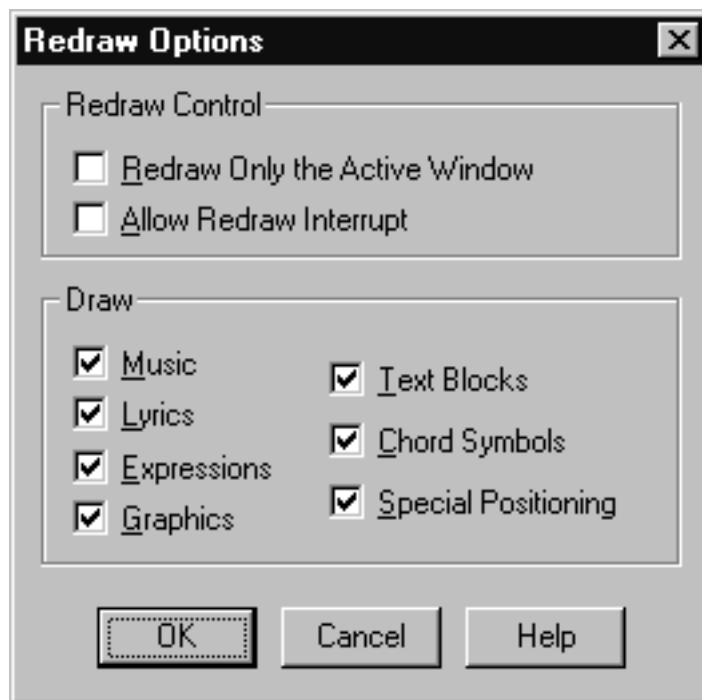
How to get there

From the View Menu, choose Redraw Options.

What it does

Because painting a screen full of complex graphics is one of the most demanding tasks for a personal computer, Finale provides a number of options to help you minimize the time it takes to do so. In this dialog box, you can turn these options on or off.

[TOC](#)[Index](#)[Next
Chapter](#)[Previous
Chapter](#)[TOC](#)[Index](#)[Next
Chapter](#)[Previous
Chapter](#)



- **Redraw Only the Active Window.** If you have several windows open that contain the same document, you may not want Finale to redraw all of them any time you change one of them. If you only want Finale to redraw the frontmost (active) window, select this option; in that case, other windows will only be updated when brought to the front.
- **Allow Redraw Interrupt.** In many cases, you don't need Finale to redraw the screen. For example, if you're scrolling through a piece, you can probably tell where you are after only the first couple measures appear; at that point, you could save time by clicking the scroll bar again. Therefore, the Allow Redraw Interrupt feature lets you halt the redrawing process with almost any action: a mouse-click, a menu selection, a scroll bar click, a keystroke, and so on. Such an interruption leaves the rest of the screen blank, but returns control of the computer to you.

If you halt a redraw when only part of the screen is visible, you can edit anything you can see. As you get used to it, you'll discover that Redraw Interrupt can save you hours of cumulative waiting time.

If you find this feature useful, be sure to choose Allow Redraw Interrupt in your Maestro Font Default file, and then choose Save from the File Menu. From now on, any new file you create will allow redraw interruption.

It's useful to remember that even if this feature is turned off, you can still cancel any redraw in progress by pressing esc.

- **Draw: Music • Lyrics • Expressions • Graphics • Text Blocks • Chord Symbols • Special Positioning.** The more graphic objects Finale has to display, the longer it takes to redraw the music. For this reason, you can omit certain musical elements from the display; click to deselect the checkboxes of those items you don't need to see for the time being. (Everything still prints, however.) Finale will only draw the items whose checkboxes are selected. If you're

[TOC](#)
[Index](#)
[Next Chapter](#)
[Previous Chapter](#)
[TOC](#)
[Index](#)
[Next Chapter](#)
[Previous Chapter](#)

working on large scores, your work may speed up significantly if Finale hides, for example, the lyrics and text blocks while you're working on the music. (Expressions are text and shape expressions; Special Positioning is any music spacing you've done using beat charts, using the Measure Tool—it takes Finale a few fractions of a second to calculate the new position of each such note.)

- **OK • Cancel.** Click OK (or press enter) to confirm, or Cancel to discard your settings. You return to the score.

Redraw

In order to speed up your work with Finale, you may want to limit the number of times Finale redraws the screen picture—a process that requires the computer to do time-consuming calculations, particularly with large scores.

See “Speed Tips” in *Installation & Tutorials* for other speed-enhancing techniques.

To halt a redraw in progress

When you're working with large or complex scores, waiting for the computer to finish redrawing the screen picture can be frustrating—especially when you don't need the full picture redrawn, as when you're simply scrolling through a piece trying to find a particular spot.

- **At any time during a screen redraw, press esc.** Finale halts the redraw in mid-stride, leaving the rest of the screen blank, but returning control of the computer to you.

If you find this feature valuable, you may even wish that any action on your part would interrupt the redrawing process—a mouse-click, a menu selection, a keystroke, and so on. See [REDRAW OPTIONS DIALOG BOX—ALLOW REDRAW INTERRUPT](#).

To speed up redraws by hiding elements

Another way to make Finale redraw the screen faster is to temporarily omit certain elements from the display; you don't need to see the lyrics, for example, while you're doing page layout.

- **Choose Redraw Options from the View Menu.** The Redraw Options dialog box appears.
- **In the Draw section of the dialog box, select the items you want temporarily omitted from the screen picture.** These items will still print, of course. See [REDRAW OPTIONS DIALOG BOX](#) for a full description.
- **Click OK (or press enter).**

To move the screen picture diagonally

Occasionally, you need to move both scroll bars—for example, if you want to move diagonally across the score—which means that Finale must redraw the screen at least twice.

In those situations, adjust the screen picture using the Hand Grabber Tool instead of the scroll bars; this tool lets you drag the display in any direction without redrawing until you let go.

Finally, as a shortcut, remember that you can switch to the Hand Grabber—regardless of which tool is highlighted on the palette—by pressing the right mouse button while dragging.

[TOC](#)

[Index](#)

[Next Chapter](#)

[Previous Chapter](#)

[TOC](#)

[Index](#)

[Next Chapter](#)

[Previous Chapter](#)

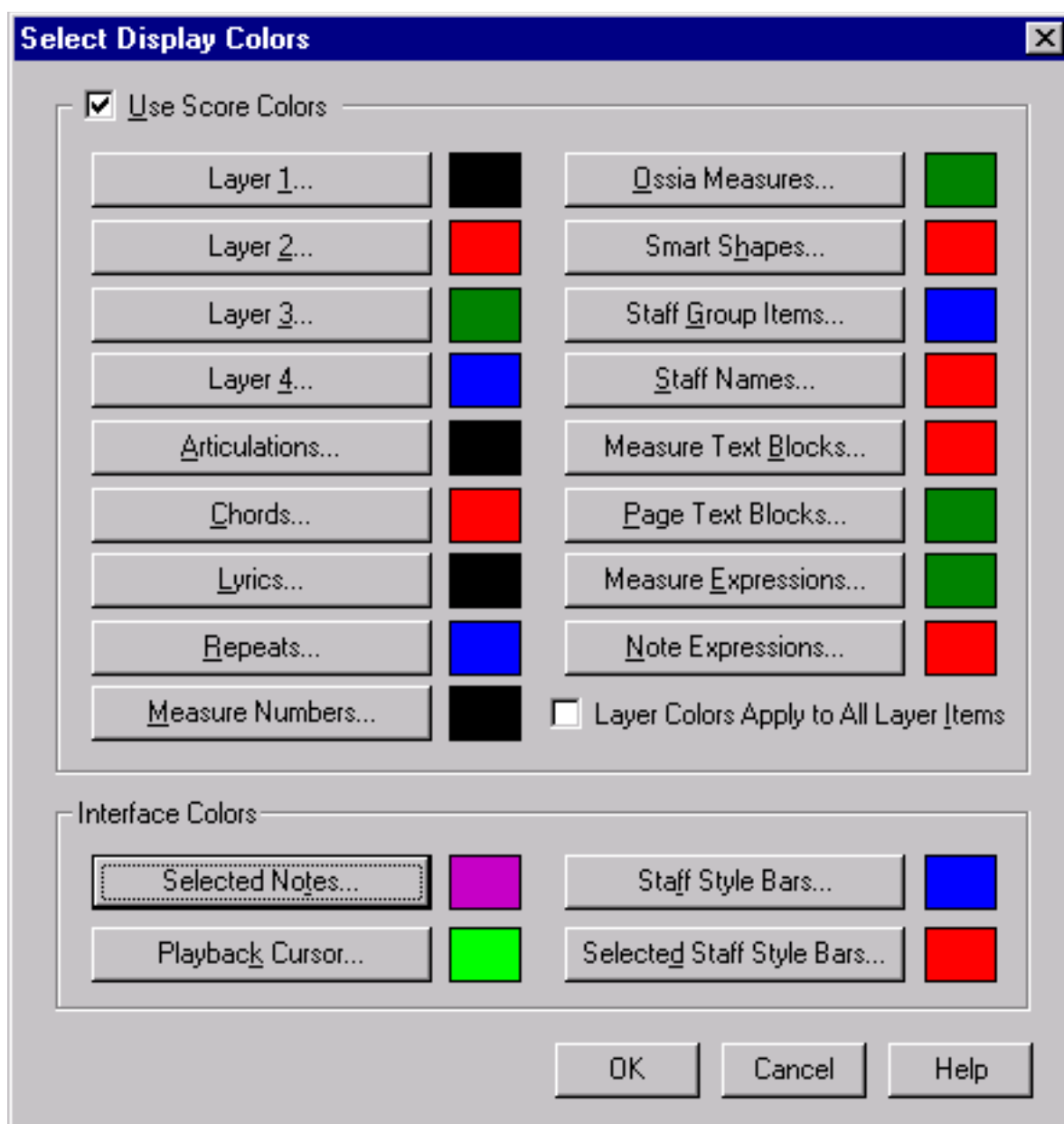
Select Display Colors dialog box

How to get there

Choose Select Display Colors from the View Menu.

What it does

The Select Display Colors dialog box allows you to assign colors to different layers as well as to different elements in your score such as Articulations, Text Blocks and Smart Shapes. This is useful for differentiating between various objects in order to easily identify which tools created them, or to which layer they belong. Display colors can be printed. Select Print Display Colors in the Print dialog box. (See [PRINT DIALOG BOX](#).) The color display settings are Program Options that are saved when Finale saves your preferences in the Finale.INI



[TOC](#)

[Index](#)

[Next Chapter](#)

[Previous Chapter](#)

[TOC](#)

[Index](#)

[Next Chapter](#)

[Previous Chapter](#)

- **Use Score Colors.** Select this checkbox if you want Finale to display musical items in color. If it is not selected, color is not used for musical items, but is still used for the interface elements. To print using the display colors, this checkbox must be selected.
- **Musical Elements: Layer 1 • Layer 2 • Layer 3 • Layer 4 . . . Note Expressions.** A number of items in your score can be assigned different colors. Click on any item button to choose a color for the item. The color specified for Staff Names will be used for all staff names in the score—both full and abbreviated names and the default, non-printing names. The color specified for Group Items will be used for all group names in the score—both full and abbreviated names and the default, non-printing names. It will also be used for the brackets and alternate barlines for the group of staves.
- **Layer Colors Apply to All Layer Items.** Select this checkbox if you want Finale to set all items in layers 1–4 to the specified colors for each layer, including items such as expressions, chords and lyrics.
- **Interface Colors: Selected Notes • Playback Cursor • Staff Style Bar • Selected Staff Style Bars.** Some items in Finale appear only in the display to help you see how Finale is functioning behind the scenes. You can control the color of the interface items listed here. Click on any item button to choose a color for the item. Selected Notes refers to control-clicking a note in Simple Entry. The Playback Cursor appears during Scrolling Playback. Staff Style Bars appear when Show Staff Styles is selected in the Staff Menu. For more details, see [STAFF STYLES](#).
- **OK • Cancel.** Click OK (or press enter) to save new settings and return to the score, or click Cancel to cancel any changes you made to the settings.

[TOC](#)[Index](#)[Next Chapter](#)[Previous Chapter](#)

Add Bookmark dialog box

How to get there

From the Bookmarks submenu of the View Menu, choose Add Bookmark. The Add Bookmark dialog box appears, showing your current location in the score.

What it does

The Add Bookmark dialog box allows you to create a new bookmark, and contains the settings used to assign a bookmark to a position in the score. The Add Bookmark dialog box offers different settings depending on whether you've selected Assign to: Scroll View or Page View.

[TOC](#)[Index](#)[Next Chapter](#)[Previous Chapter](#)

Add Bookmark

Name:

Assign to: ☐ Scroll View ☒ Page View

Settings for Page View

Page

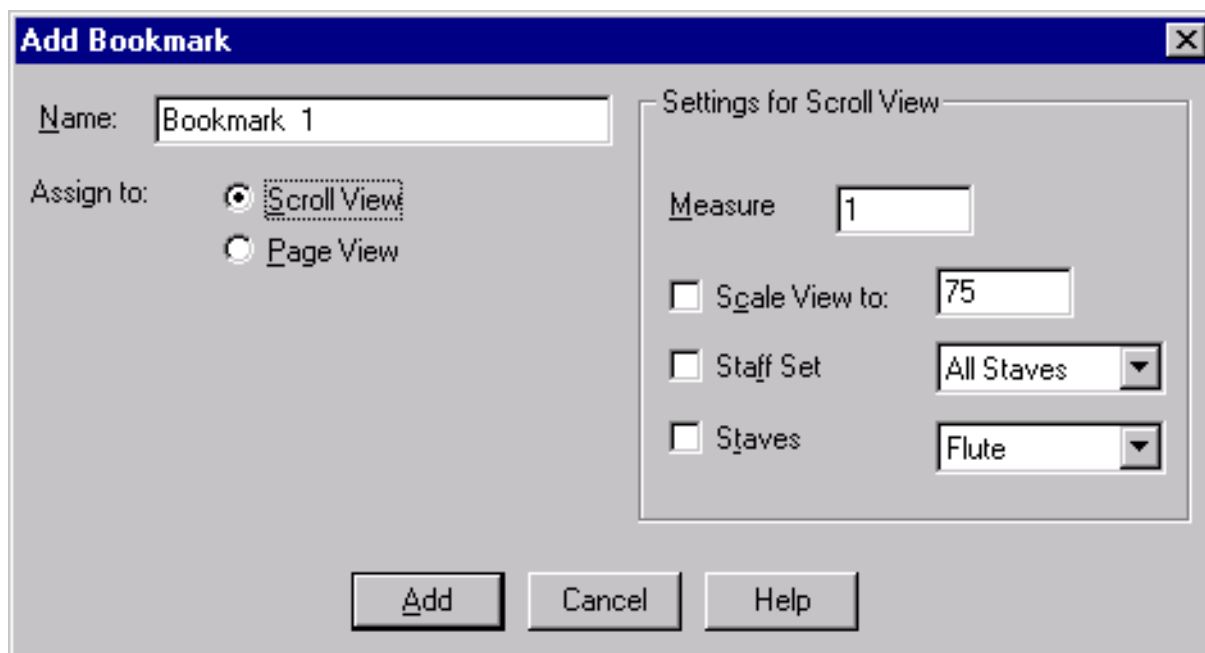
☐ Scale View to:

☒ Horizontal

☒ Vertical

- **Name.** Although Finale offers a default name, you can enter a descriptive name for the bookmark to be added.
- **Assign to: Scroll View • Page View.** Assign a bookmark to Page View or Scroll View by clicking the appropriate radio button.
- **Settings for Page View: Page • Scale View to • Horizontal • Vertical.** The Page View settings reflect the score setup when you enter the Add Bookmark dialog box. Click the checkboxes for the settings you want remembered for this bookmark. In the Page text box, enter the page number that the bookmark will be assigned to. Scale View to is the size the score displays on the screen. Enter a valid view percentage. Enter a value into the Horizontal text box corresponding to the bookmark's horizontal position on the page. Enter a value in the Vertical text box corresponding to the bookmark's vertical position on the page. Use the current measurement unit.

[TOC](#)[Index](#)[Next Chapter](#)[Previous Chapter](#)[TOC](#)[Index](#)[Next Chapter](#)[Previous Chapter](#)



- **Settings for Scroll View: Measure • Scale View to • Staff Set • Staves.** The Scroll View settings reflect the score setup when you enter the Add Bookmark dialog box. Click the checkboxes for the settings you want remembered for this bookmark. In the Measure text box, enter the number of the measure that the bookmark will be assigned to. Scale View to is the size the score displays on the screen. Enter a valid Scale View percentage. Either choose a Staff Set option to associate the bookmark with all staves or a staff set at the selected Measure, or use the Staves option to name an individual staff associated with the bookmark at the indicated Measure.

The measure you are marking is the “absolute” measure number in the piece. If you add or delete measures after the bookmark is created, the music at the marked measure could be different. As an example, if you put a bookmark at measure 10, then delete measure 9, you will still go to measure 10 when the bookmark is called, but you will see the music that was previously in measure 11.

- **Add • Cancel.** Click Add (or press enter) to add a bookmark. Click Cancel to return to your score without adding a bookmark.

Edit Bookmarks dialog box

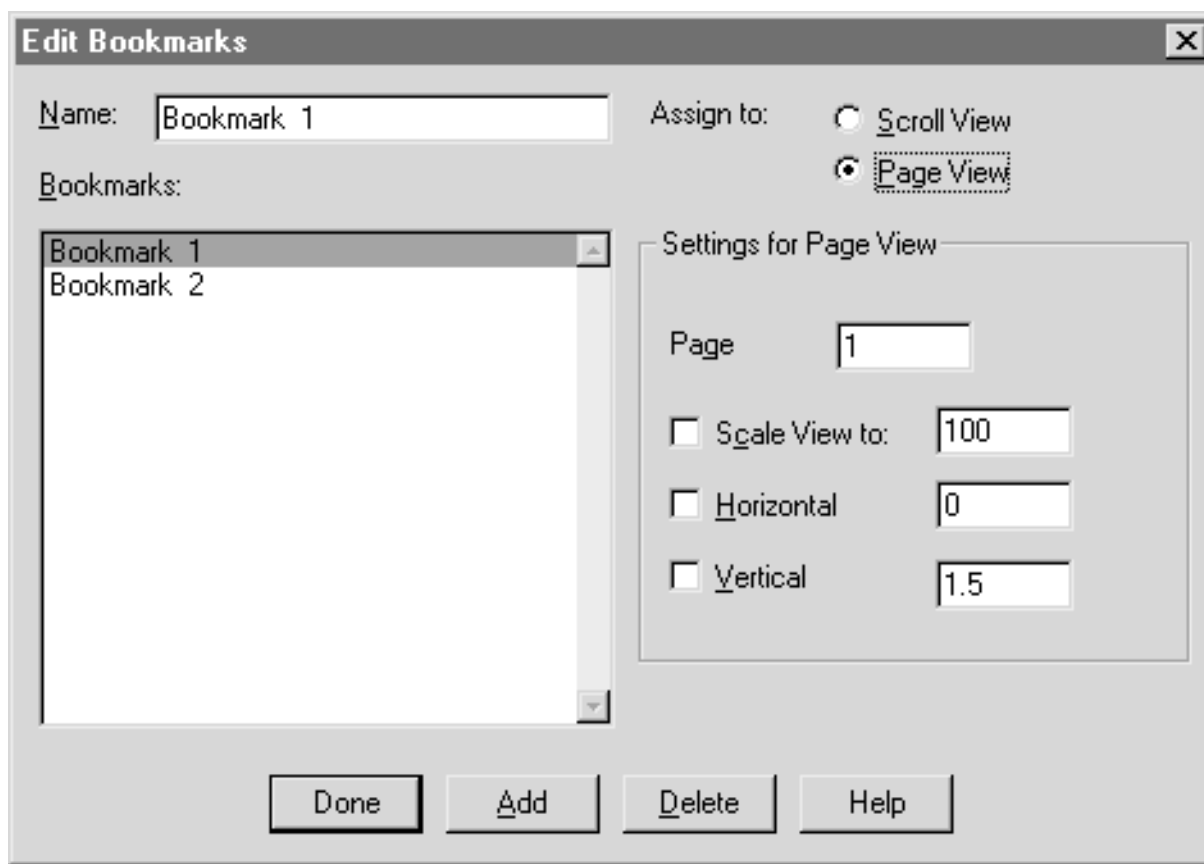
How to get there

From the Bookmarks submenu of the View Menu, choose Edit Bookmarks. The Edit Bookmarks dialog box for the current view (Page or Scroll View) appears.

What it does

Use the Edit Bookmarks dialog box to add a bookmark to the score, to edit the settings of an existing bookmark, or to remove a bookmark from the score. The Edit Bookmarks dialog box changes slightly depending on whether you’ve selected Assign to: Scroll View or Page View.

[TOC](#)
[Index](#)
[Next Chapter](#)
[Previous Chapter](#)
[TOC](#)
[Index](#)
[Next Chapter](#)
[Previous Chapter](#)



- **Name.** Enter the name of a bookmark to be added or edited, or select the bookmark name in the Bookmarks list box.
- **Assign to: Scroll View • Page View.** Assign a bookmark to Page View or Scroll View by clicking the appropriate radio button.
- **Bookmarks.** This list box contains the names of existing bookmarks. Use the scroll bars as needed to display the bookmarks. When you select a bookmark in this list, its name appears in the Name text box. Any changes you make to the bookmark settings affect the current bookmark. Changes are updated as they are made.
- **Settings for Page View: Page • Scale View to • Horizontal • Vertical.** These settings are the same as the Add Bookmark Page View settings. See [ADD BOOKMARK DIALOG BOX](#).

TOC

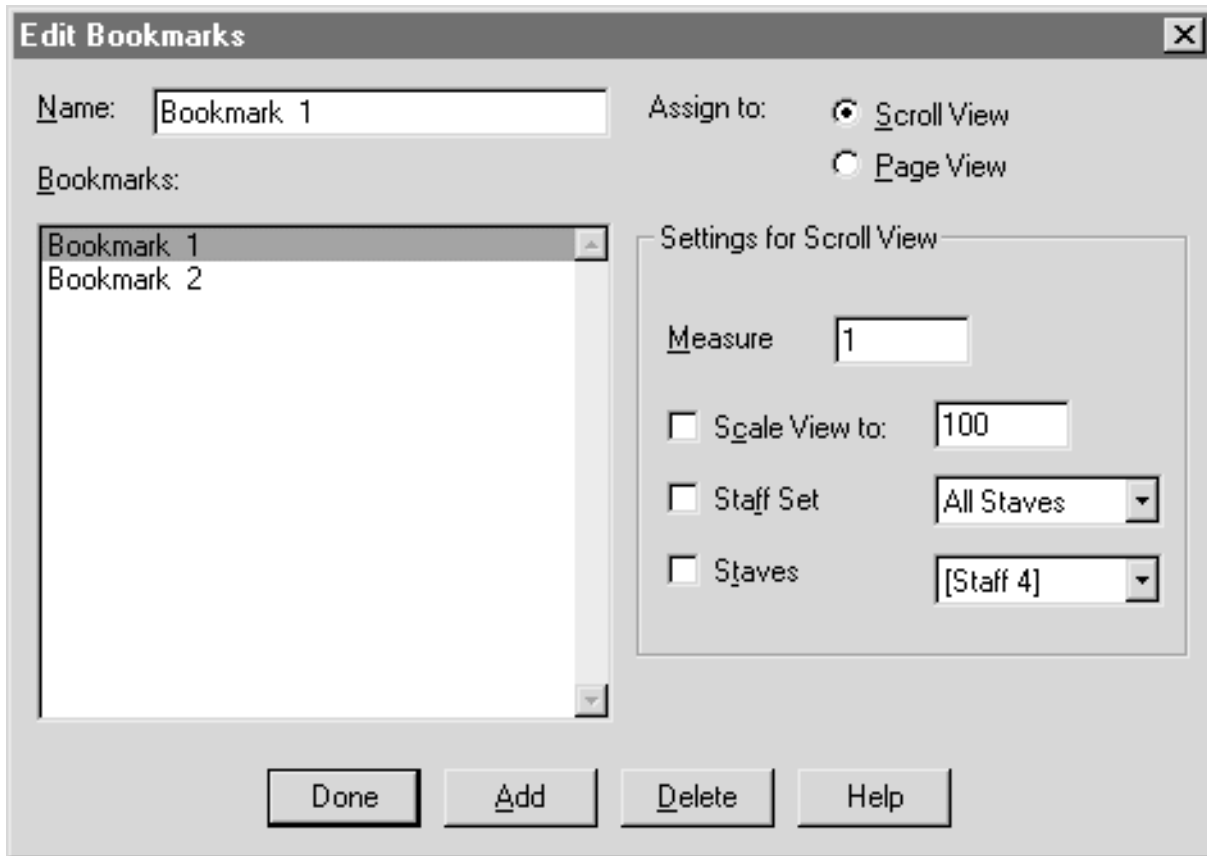
Index

Next
ChapterPrevious
Chapter

TOC

Index

Next
ChapterPrevious
Chapter



- **Settings for Scroll View: Measure • Scale View to • Staff Set • Staves.** These settings are the same as the Add Bookmark Scroll View settings. See [ADD BOOKMARK DIALOG BOX](#).
- **Add • Delete.** Click Add to create a new bookmark, or click Delete to remove the selected bookmark.
- **Done.** Click Done (or press enter) to complete the action and return to the score.

Bookmarks

To add a bookmark (using the Add Bookmark command)

TIP: The most efficient way to take advantage of the power of Bookmarks is to first set the document up in the window just the way you want to see it before creating a bookmark. Be sure you have the music, the view (Page or Scroll view) and the view percentage showing on the screen, then select the Add Bookmark command in the View Menu. This way, most of the settings you want will already be set for you when the Add Bookmark dialog appears.

- **Choose Add Bookmark from the Bookmarks submenu in the View Menu.** The Add Bookmark dialog box appears with the current settings selected.
- **Choose Page View or Scroll View, depending on how you want to assign the bookmark.** The Add Bookmark dialog box defaults to the current view settings in your score.
- **Enter a descriptive name for the new bookmark.**

[TOC](#)
[Index](#)
[Next Chapter](#)
[Previous Chapter](#)
[TOC](#)
[Index](#)
[Next Chapter](#)
[Previous Chapter](#)

- **Select the checkboxes for the settings that you want saved with this bookmark.**

Important: You must check the check boxes for those settings you want the bookmark to use. Otherwise the current settings of the display will be used when the bookmark is called.

- **Click Add to save the new bookmark and its position.** The new bookmark's name is added to the Bookmarks submenu in the View Menu.

To add a bookmark (using the Edit Bookmarks command)

- **Choose Edit Bookmarks from the Bookmarks submenu in the View Menu.** The Edit Bookmarks dialog box appears.
- **Click Add.** A new bookmark is added to the list using the current settings from the score.
- **Choose Page View or Scroll View, depending on how you want to assign the bookmark.** The Edit Bookmarks dialog box defaults to the current view settings in your score.
- **Enter a descriptive name for the new bookmark.**
- **Select the checkboxes for the settings that you want saved with this bookmark.**

Important: You must check the check boxes for those settings you want the bookmark to use. Otherwise the current settings of the display will be used when the bookmark is called.

- **Click Done (or press enter) to return to the score.** The new bookmark's name is added to the Bookmarks submenu in the View Menu.

To edit a bookmark

- **Choose Edit Bookmarks from the Bookmarks submenu in the View Menu.** The Edit Bookmarks dialog box appears.
- **In the Bookmarks scrolling list box, click to select the bookmark that you want to edit.** The bookmark's settings appear.
- **Select the checkboxes for the settings that you want to change.** The bookmark is immediately updated when you make a change.
- **Click Done (or press enter) to return to the score.**

To delete a bookmark

- **Choose Edit Bookmarks from the Bookmarks submenu in the View Menu.** The Edit Bookmarks dialog box appears with its current settings.
- **In the Bookmarks scrolling list box, click to select the bookmark you want to delete.**
- **Click Delete.** The bookmark disappears from the Bookmarks scrolling list box.
- **Click Done (or press enter) to return to the score.** The bookmark will disappear from the Bookmarks submenu in the View Menu.

To navigate with bookmarks

- **Choose the name of the bookmark from the Bookmarks submenu in the View Menu.** Finale displays the score at the bookmark location and automatically restores the working environment that you saved when you created or edited the bookmark.

IMPORTANT: The bookmark will use the settings made when the bookmark was created only if you checked the checkbox for the settings you wanted to use. Otherwise, the scale view and position settings currently in use will be applied when the bookmark location is displayed.

[TOC](#)[Index](#)[Next
Chapter](#)[Previous
Chapter](#)[TOC](#)[Index](#)[Next
Chapter](#)[Previous
Chapter](#)

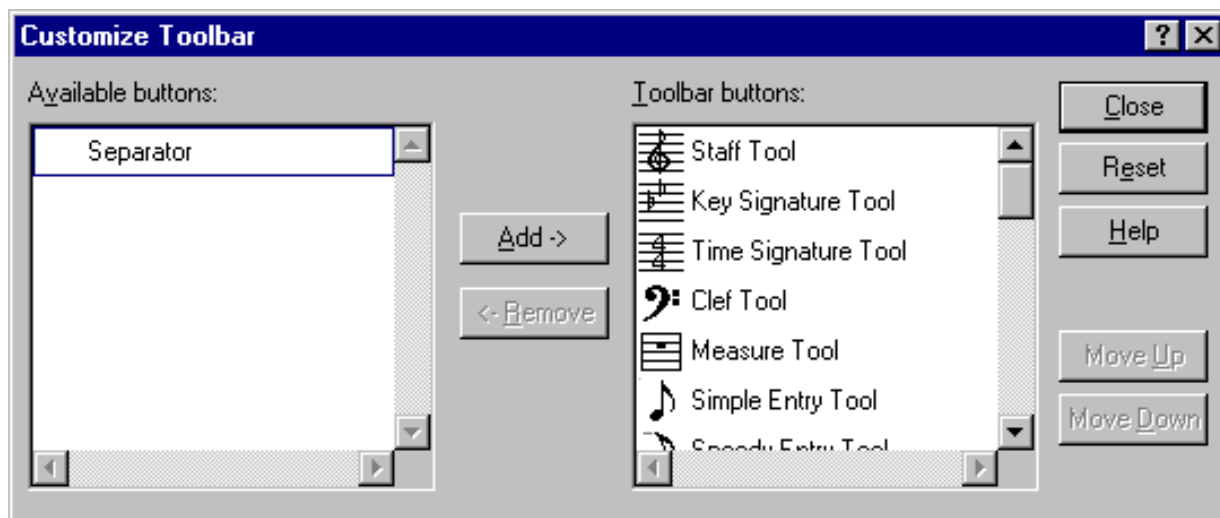
Customize Toolbar dialog box

How to get there

From the View Menu, choose Customize Palettes, then choose one of the Palettes. The Customize Toolbar dialog box appears.

What it does

Use the Customize Toolbar dialog box to add, remove, or rearrange the tools in your palettes.



- **Add • Remove.** Select an icon from available buttons, then click Add to move the icon onto the toolbar. Select an icon from the Toolbar buttons, then click Remove to delete the icon from the toolbar.
- **Move Up • Move Down.** Select an icon from the Toolbar button, then click Move Up or Move Down to rearrange the order of the tool in your palette.
- **Close • Reset.** Click Close to save the new settings and return to the score. Click Reset to return the palette to the tool arrangement you had when you entered the dialog box.

Grid/Guide Options dialog box

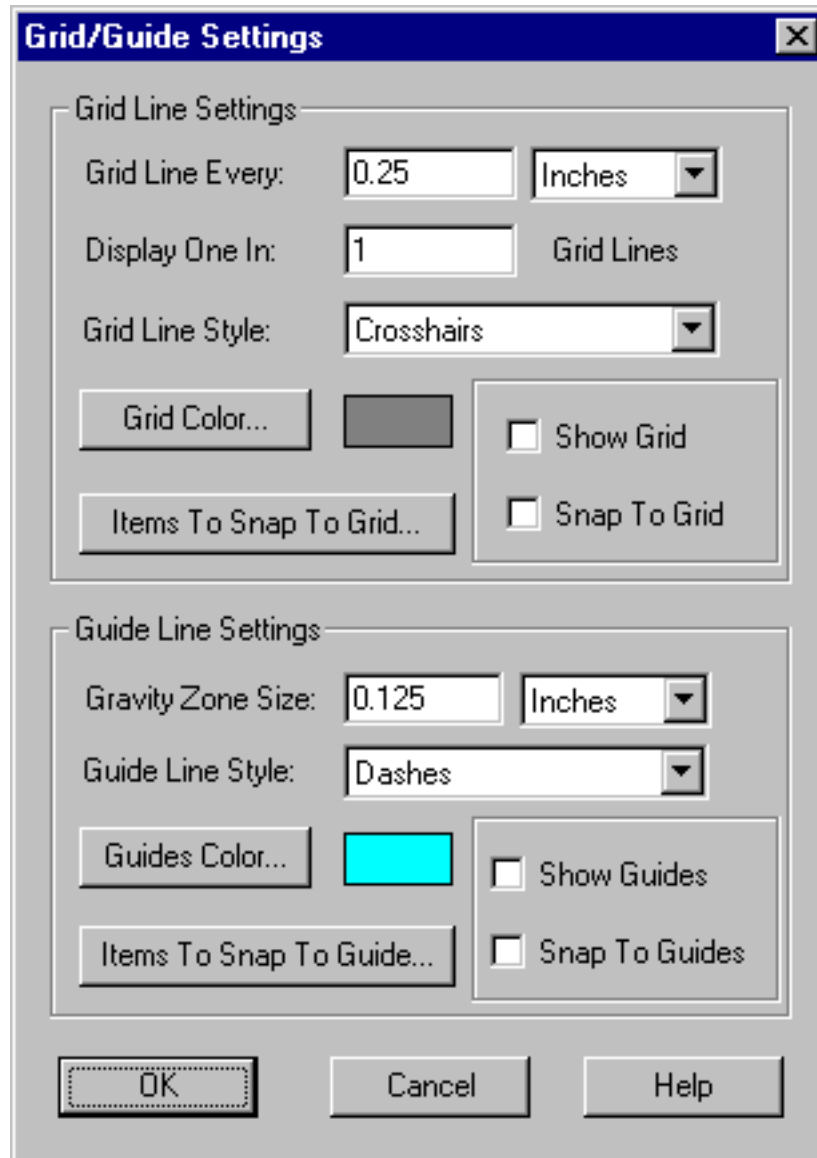
How to get there

Choose Grid/Guide Options from the View Menu.

What it does

Use the Grid/Guide Options dialog box to set the various options for the grids and guides on your page.

[TOC](#)
[Index](#)
[Next Chapter](#)
[Previous Chapter](#)
[TOC](#)
[Index](#)
[Next Chapter](#)
[Previous Chapter](#)



- **Grid Line Every.** Type in the number and select the units for your grid spacing.
- **Display One In ____ .** You can set how dense the grid is displayed. Even though you are snapping every quarter inch, you can display the grid every half inch.
- **Gravity Zone Size.** Use this text box and units selection to specify the area around the guide that will be affected by Snap to Guide.
- **Grid Line Style • Guide Line Style: Solid • Dashes • Dots • Cross hairs.** Select the type of grid and guide to be displayed.
- **Grid Color • Guide Color.** Click on these buttons to set the Grid and Guide color.
- **Items to Snap to Grid • Items to Snap to Guide.** Click on these buttons to select which items will be affected by snapping. See [ITEMS TO SNAP TO GRID DIALOG BOX](#).
- **Show Grid • Show Guide.** Select these checkboxes to display the grids and guides. This is the same as selecting Show Grid or Show Guide from the View Menu. See [VIEW MENU](#).

[TOC](#)

[Index](#)

[Next Chapter](#)

[Previous Chapter](#)

[TOC](#)

[Index](#)

[Next Chapter](#)

[Previous Chapter](#)

- **Snap to Grid • Snap to Guide.** Select these checkboxes to activate Snap to Grid or Snap to Guide. This is the same as selecting Snap to Grid or Snap to Guide from the Edit Menu. See [EDIT MENU](#).
- **OK • Cancel.** Click OK (or press enter) to save new settings and return to the score, or click Cancel to cancel any changes you made to the settings.

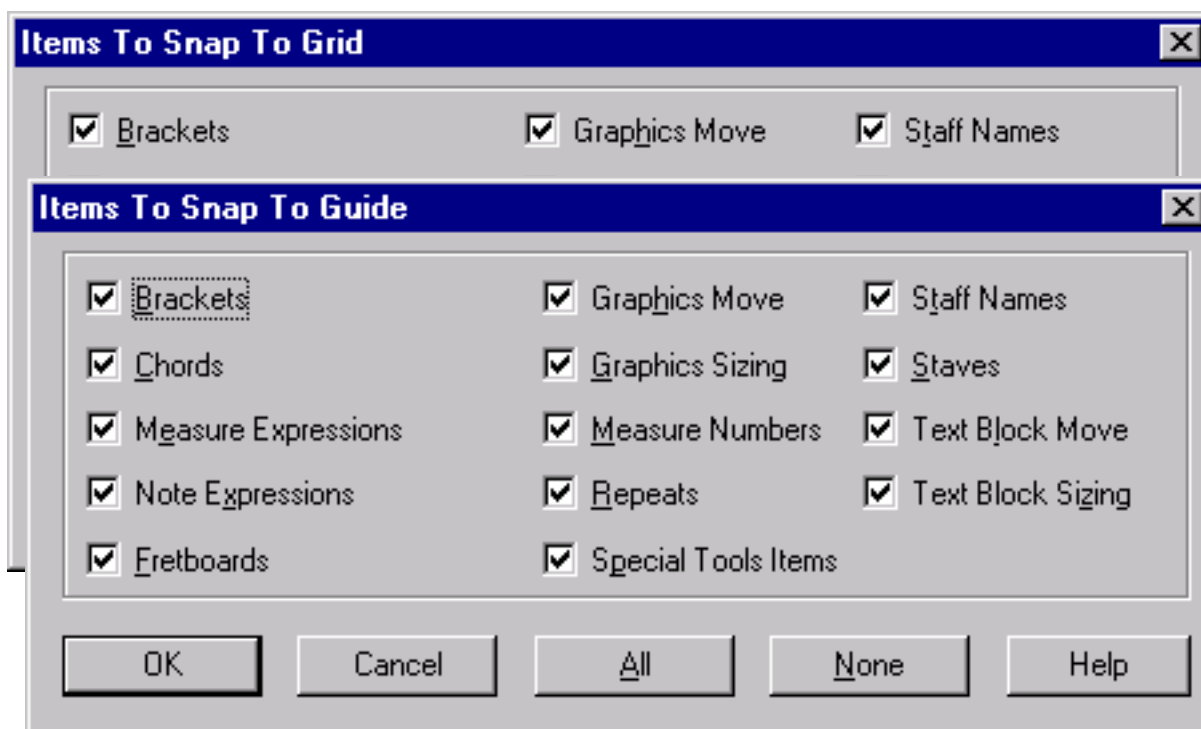
Items to Snap to Grid and Items to Snap to Guide dialog boxes

How to get there

Choose Grid/Guide Options from the View Menu. Click on Items to Snap to Grid or Items to Snap to Guide.

What it does

Use the Items to Snap dialog boxes to select the types of items that will be affected by the snapping function.



- **Brackets • Chords • Measure Expressions • Note Expressions • Fretboards • Graphics Move • Graphics Sizing • Measure Numbers • Repeats • Special Tools Items • Staff Names • Staves • Text Block Move • Text Block Sizing.** Select any number of these items to be affected by snapping when it is implemented. Note: only Optimized Staves will snap when dragging the lower optimized handle.
- **All • None.** Use these buttons as shortcuts to select or deselected all the items at once.
- **OK • Cancel.** Click OK (or press enter) to save new settings and return to the Grid/Guide Options dialog box, or click Cancel to cancel any changes you made to the settings.

[TOC](#)
[Index](#)
[Next Chapter](#)
[Previous Chapter](#)
[TOC](#)
[Index](#)
[Next Chapter](#)
[Previous Chapter](#)

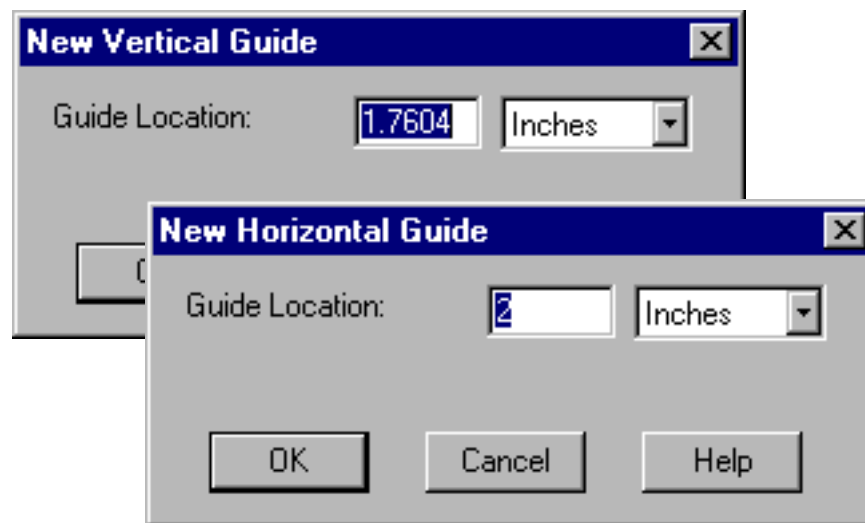
New Vertical Guide and New Horizontal Guide dialog boxes

How to get there

With Show Guides selected, right-click on the Ruler and select New Guide.

What it does

Creates a new guide for aligning items, such as tempo markings. You can leave the position where you clicked or enter a precise numeric position.



- **Guide Location.** Enter the specific location for the guide in this text box in the units specified in the drop-down list.
- **OK • Cancel.** Click OK (or press enter)

Reposition Vertical Guide and Reposition Horizontal Guide dialog boxes

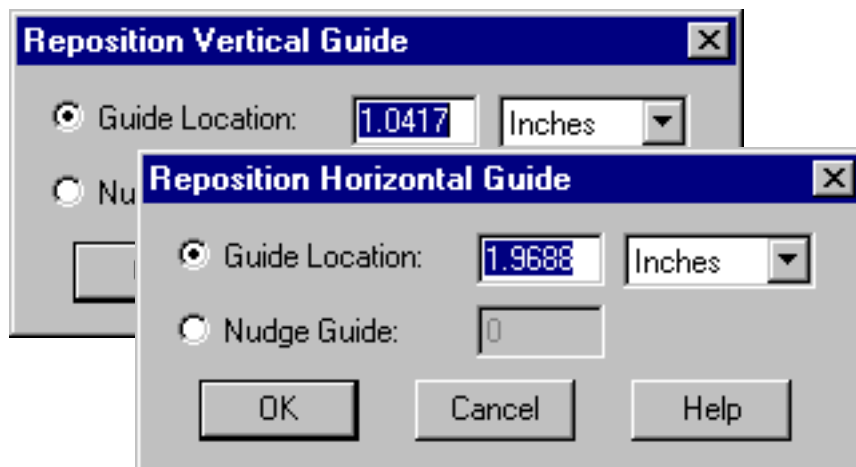
How to get there

Right-click on a guide and select Reposition Guide from the contextual menu.

What it does

Use the Reposition Guide dialog boxes to numerically adjust or nudge a guide into a specific position on the page.

[TOC](#)[Index](#)[Next Chapter](#)[Previous Chapter](#)[TOC](#)[Index](#)[Next Chapter](#)[Previous Chapter](#)



- **Guide Location.** Enter the specific location for the guide in this text box in the units specified in the drop-down list.
- **Nudge Guide.** Select this option to nudge the selected guide the specified number of pixels.
- **OK • Cancel.** Click OK (or press enter) to move the guide and return to the score, or click Cancel to cancel any changes you made.

[TOC](#)[Index](#)[Next Chapter](#)[Previous Chapter](#)[TOC](#)[Index](#)[Next Chapter](#)[Previous Chapter](#)